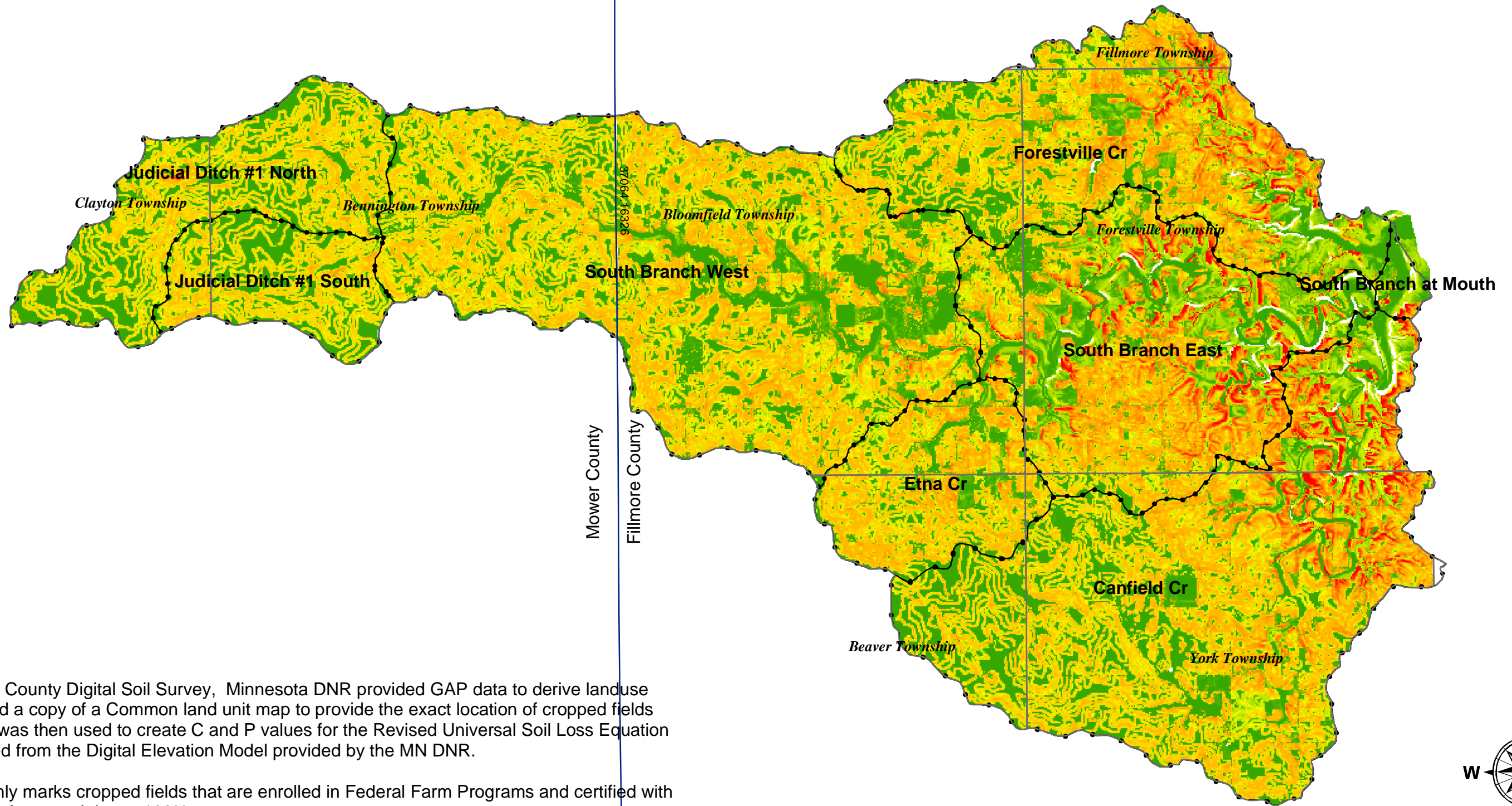
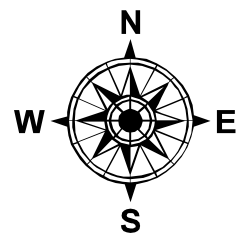


**South Branch Root River
Clean Water Partnership
Erosion Potential**



Source: Fillmore County Digital Soil Survey, Minnesota DNR provided GAP data to derive land use. The FSA provided a copy of a Common land unit map to provide the exact location of cropped fields. This information was then used to create C and P values for the Revised Universal Soil Loss Equation. Slope was derived from the Digital Elevation Model provided by the MN DNR.

The CLU layer only marks cropped fields that are enrolled in Federal Farm Programs and certified with the Farm Service Agency. It is not 100% accurate.



Legend

Watersheds	Tons/Acre Soil Loss	2.1 - 3	5.1 - 6	15.1 - 20	30.1 - 50	150.1 - 200	300.1 - 350
CLU Complete	0 - 1	3.1 - 4	6.1 - 10	20.1 - 25	50.1 - 100	200.1 - 250	350.1 - 400
Cropped Areas	1.1 - 2	4.1 - 5	10.1 - 15	25.1 - 30	100.1 - 150	250.1 - 300	400.1 - 500
Non-Cropped Areas							
						Townships	
						ctybdln2	

Miles

0 1 2 4 6 8

1 inch equals 1.6 miles

1:100,000